

# Product Description

## Arl3-GTP

**Catalog Number:** 26925

**Gene Symbol:** ARL3

**Description:** Anti-Arl3-GTP Mouse Monoclonal Antibody

**Background:** Arl3 (Arf-like 3) is an Arf family protein. Arl3 binds microtubules to alter specific aspects of cytokinesis. It has been proposed that retinitis pigmentosa 2 functions in concert with Arl3 to link the cell membrane and the cytoskeleton in photoreceptors as part of the cell signaling or vesicular transport machinery.

**Immunogen:** Recombinant Arl3 protein (active form)

**Tested Applications:** IP, IHC, IF

**Recommended Dilutions:**

IP: 1 µg for 1~2 mg total cellular proteins

IHC, IF: 1:50-1:250

**Concentration:** 1 mg/ml

**Host:** Mouse

**Clonality:** Monoclonal

**Purity:** Purified from ascites

**Format:** Liquid

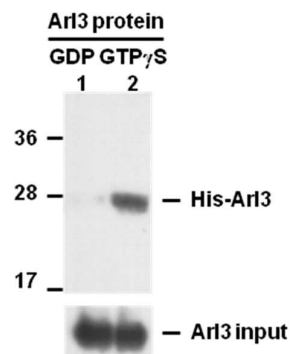
**Preservative:** No

**Constituents:** PBS (without  $Mg^{2+}$  and  $Ca^{2+}$ ), pH 7.4, 150 mM NaCl, 50% glycerol.

**Species Reactivity:** Anti-Arl3-GTP antibody recognizes active Arl3-GTP from vertebrates

**Storage Conditions:** Store at -20°C. Avoid repeated freezing and thawing

### Immunoprecipitation and Western blot:



**IP:** anti-active Arl3 mAb

**IB:** anti-Arl3 mAb

### Arl3 Activation Assay.

Purified His-tagged Arl3 proteins (Cat. #10152) were immunoprecipitated with the anti-Arl3-GTP monoclonal antibody (Cat. # 26925) after treated with GDP (lane 1) or GTP $\gamma$ S (lane 2), and was blotted with anti-Arl3 monoclonal antibody (Cat. # 21070). Input controls are shown in the bottom panel.

FOR RESEARCH USE ONLY. NOT FOR DIAGNOSTIC APPLICATIONS